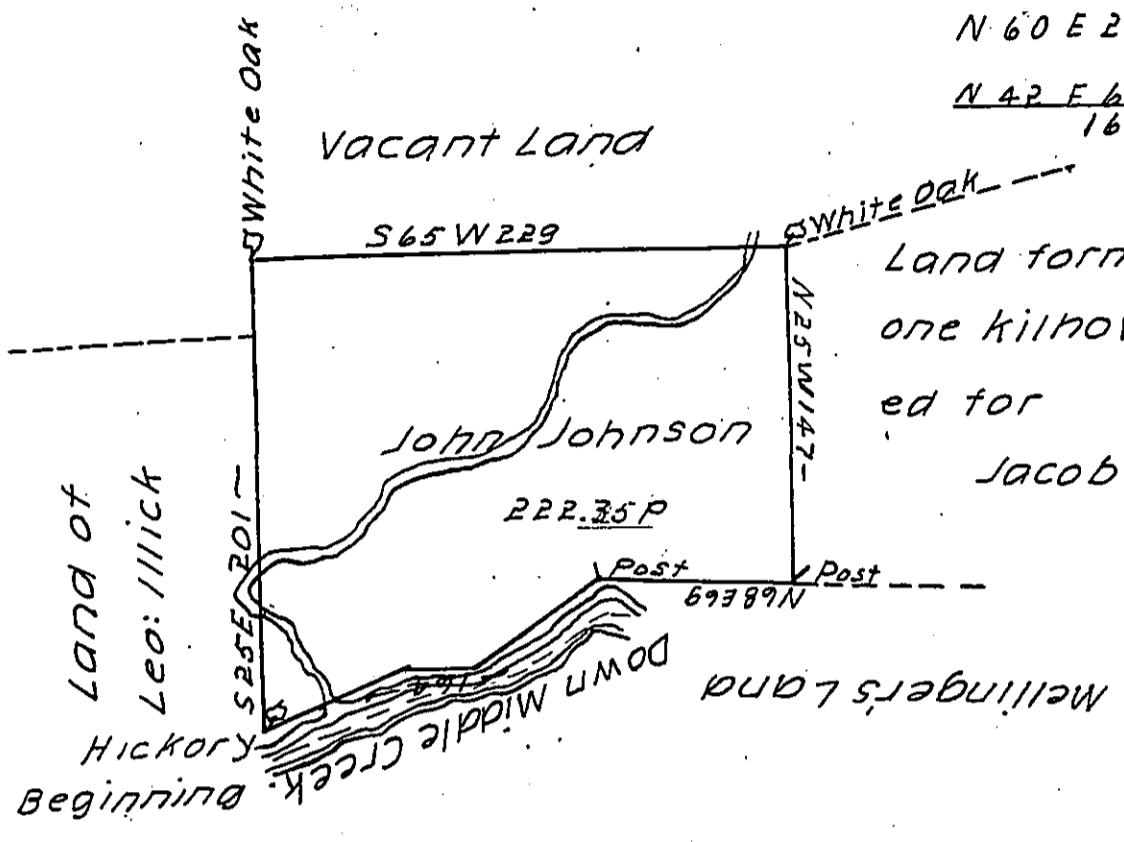


Courses & Distances
Down Middle Creek

N 33 E 70
N 60 E 28
N 42 E 66
164



Land formerly claimed by
one Kilhover BUT return-
ed for
Jacob Gemberling

The Draught of a Tract of Land called
situate on Middle Creek, in Penn's Township in
the County of Northumberland, containing Two
hundred Seventy Two Acres 35 Perches with the
usual Allow of Six P Cent: for Roads: Survey'd
the 26th day of December Anno Dom: 1767: In
Pursuance of an Order of Survey to John John-
son bearing Date at Philad^a the 12th day of
November Anno Dom: 1767 and numbered 4568-

PW^m Maclay

To John Lukens Esq SG
of Pennsylvania

IN TESTIMONY that the above is a copy of the original remaining on file in
the Department of Internal Affairs of Pennsylvania, made
conformably to an Act of Assembly approved the 16th day of
February, 1833, I have hereunto set my Hand and caused
the Seal of said Department to be affixed at Harrisburg,
this eleventh day of August 1911.

Mary Houck
Secretary of Internal Affairs.